

De invloed van persoonlijkheid op de effectiviteit van cognitieve therapie en interpersoonlijke therapie voor depressie



Suzanne van Bronswijk
Arts in opleiding tot psychiater
9.10.2015

Stelling



+ cluster C persoonlijkheidsstoornis



slechtere behandeluitkomst IPT/CT voor depressie



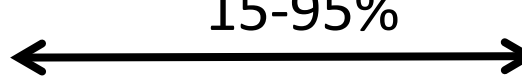
waar



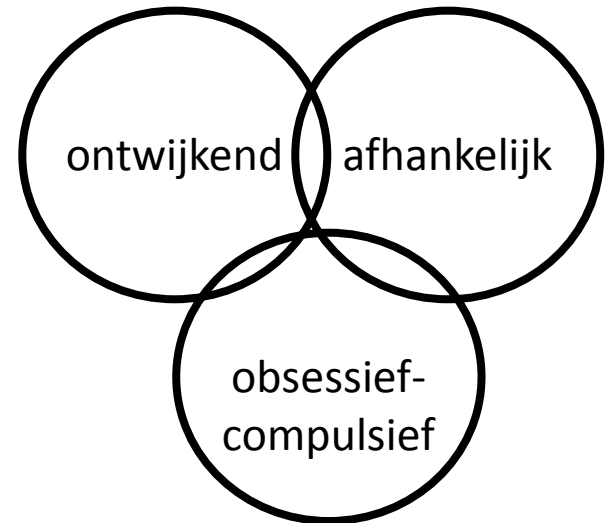
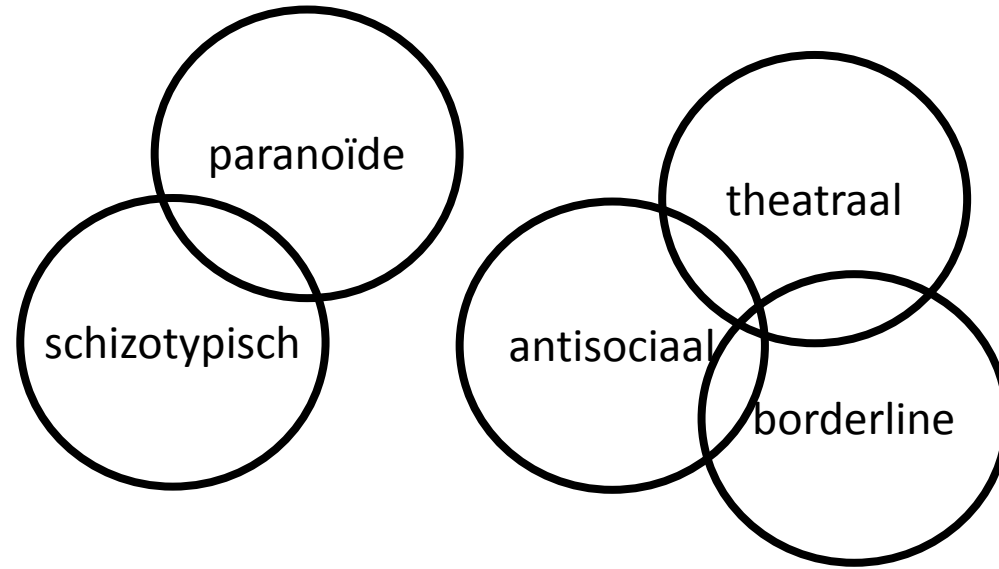
niet waar



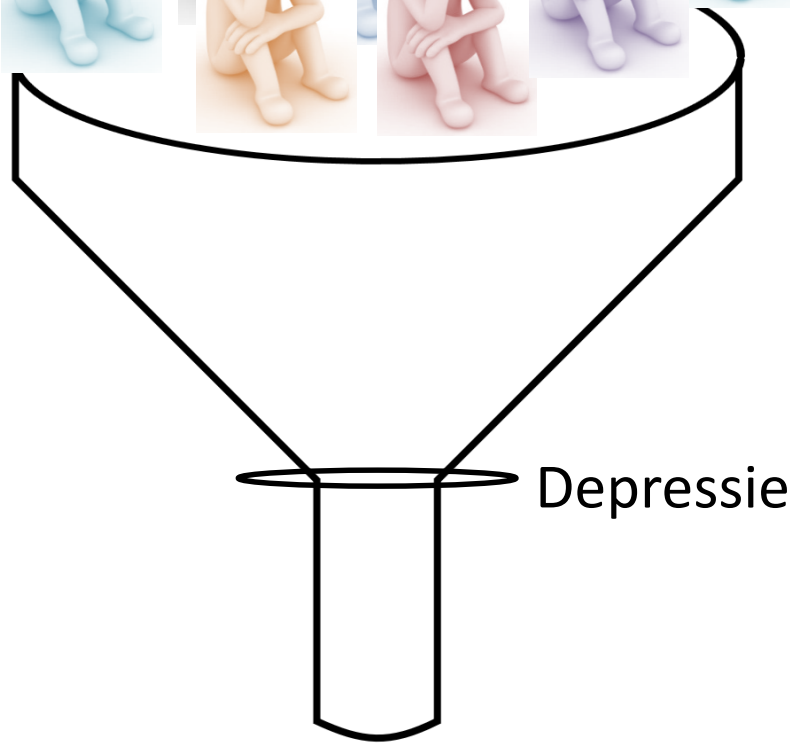
15-95%



Persoonlijkheidsstoornis



Wat past bij wie?



Depressie

CT

IPT

SSRI

TCA

ECT

CT versus IPT

- Even effectief
- Standaard psychotherapeutische zorg voor depressie

CT versus IPT



National Institute of Mental Health

CT



+ persoonlijkheidsstoornis



hetzelfde

IPT

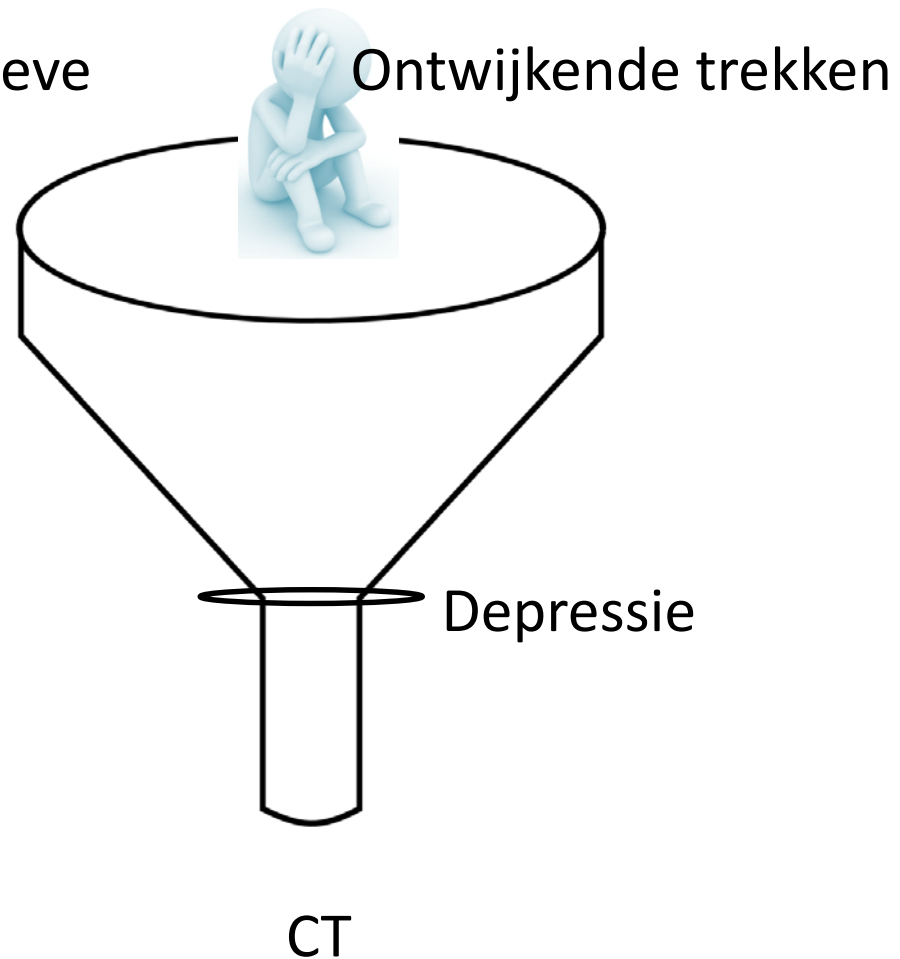
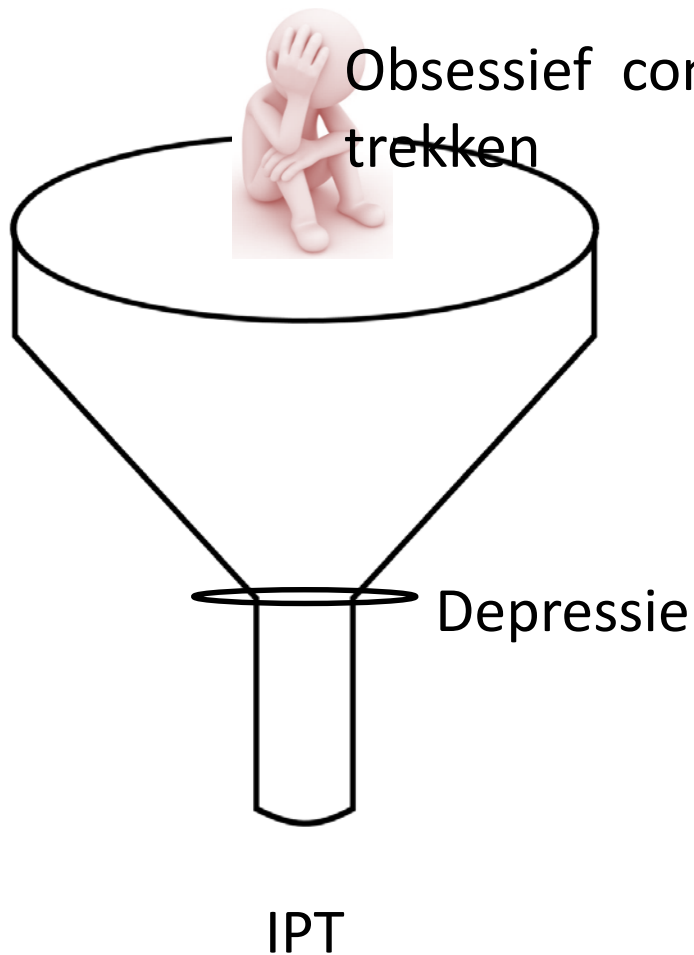


+ persoonlijkheidsstoornis

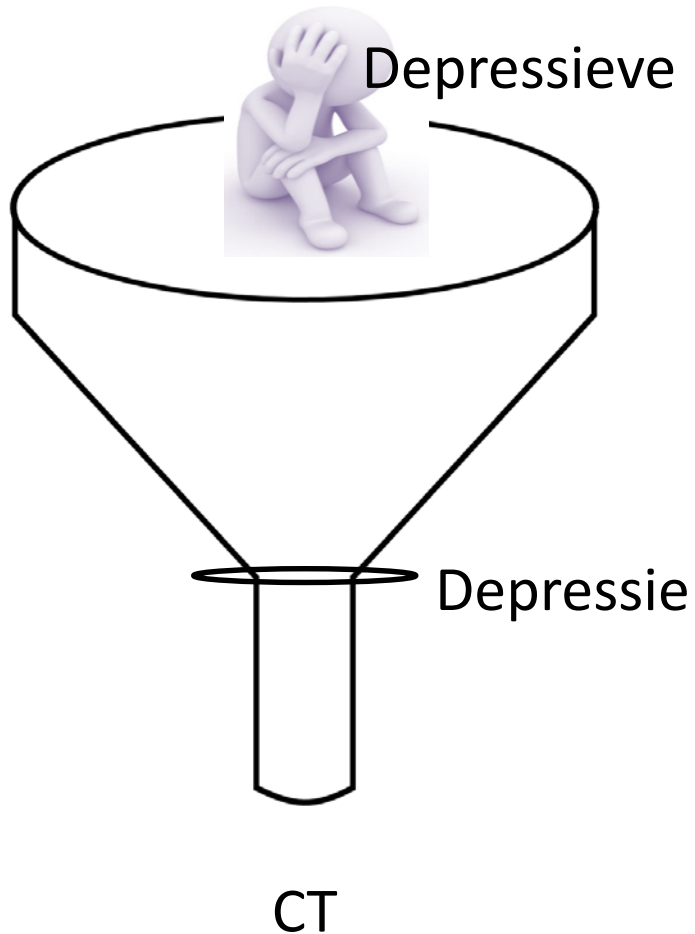


hetzelfde

National Institute of Mental Health



Toronto University Study



Christchurch Psychotherapy of Depression Study

CT



+ persoonlijkheidsstoornis



hetzelfde

IPT

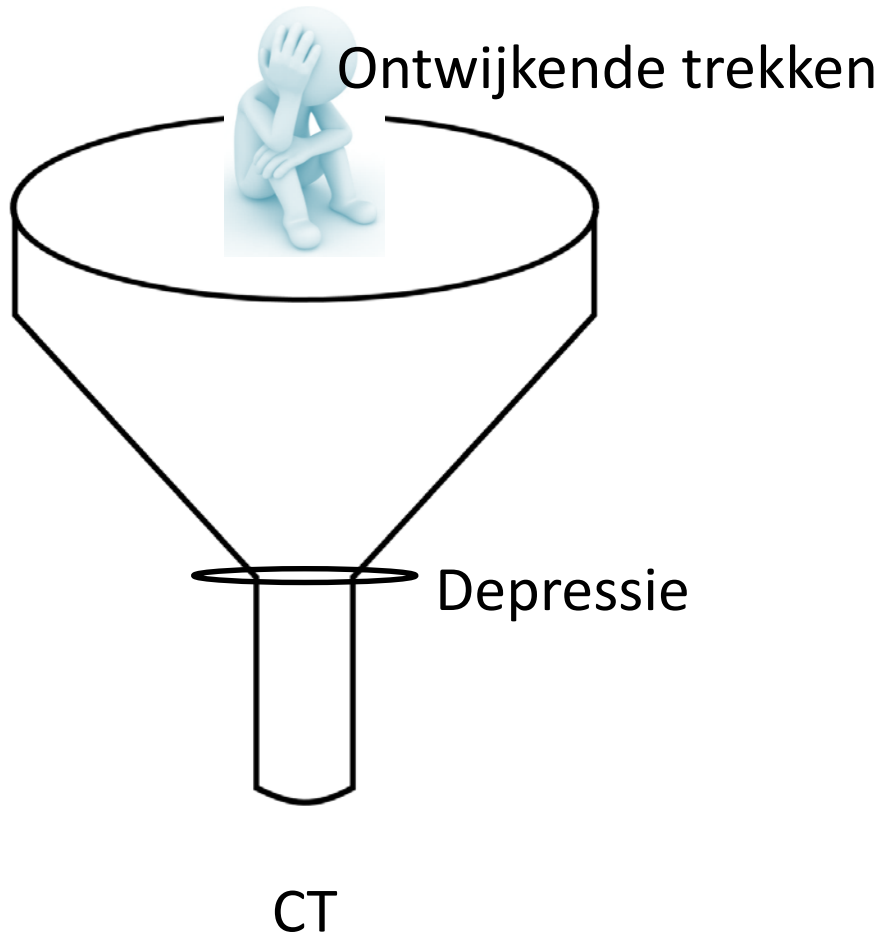


+ persoonlijkheidsstoornis

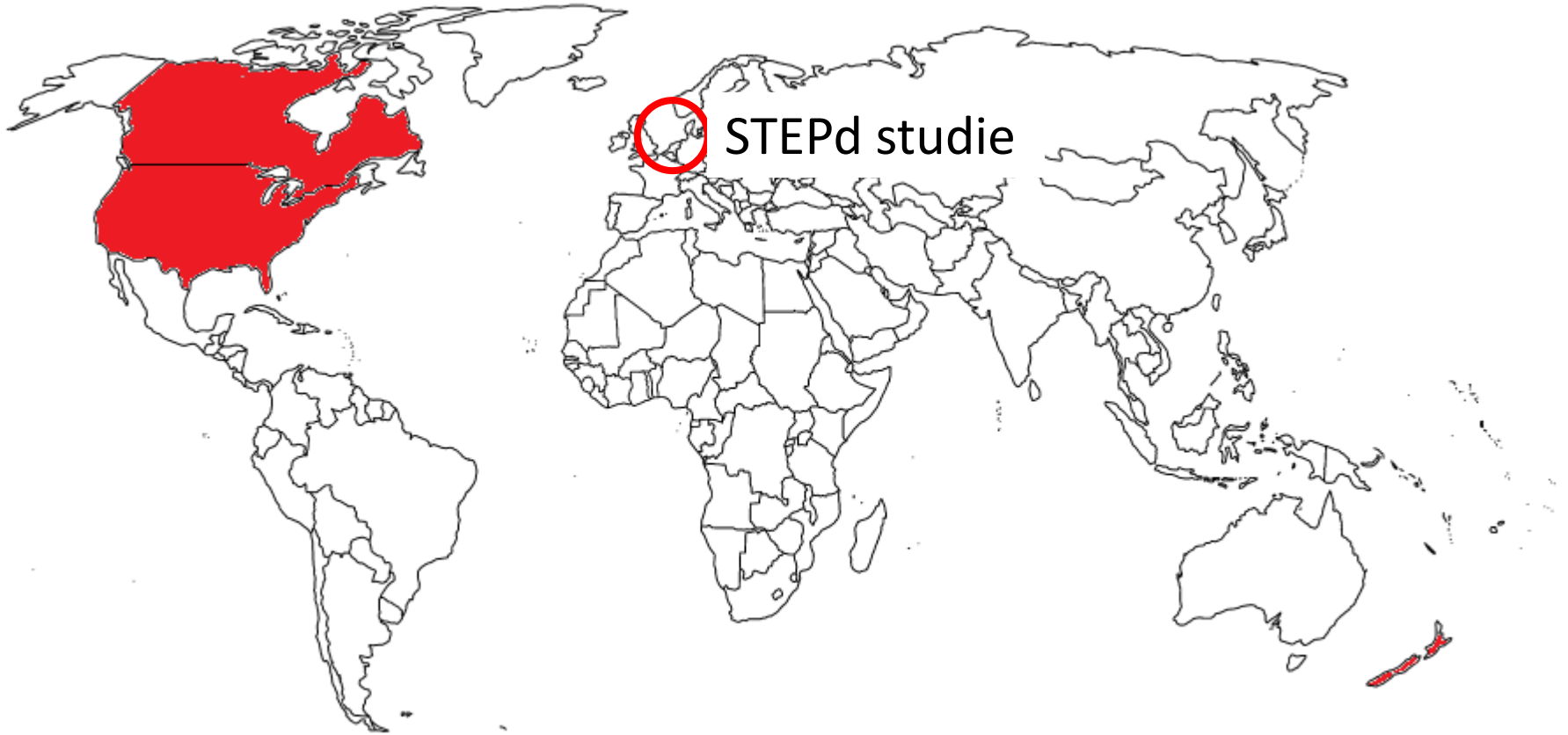


slechter

Christchurch Psychotherapy of Depression Study



CT versus IPT



STEPd studie

- Virenze RIAGG Maastricht
- CT (n=76) vs IPT (n=75) vs wachtlijst (n=31)
- 12 tot 20 sessies
- 10 therapeuten
- SCID-I/SCID-II
- BDI-II

SCID-II: persoonlijkheid



+ persoonlijkheidsstoornis
ja/nee



Ontwijkende trekken

score 0-7



Afhankelijke trekken

score 0-8



Obsessief compulsieve
trekken

score 0-8

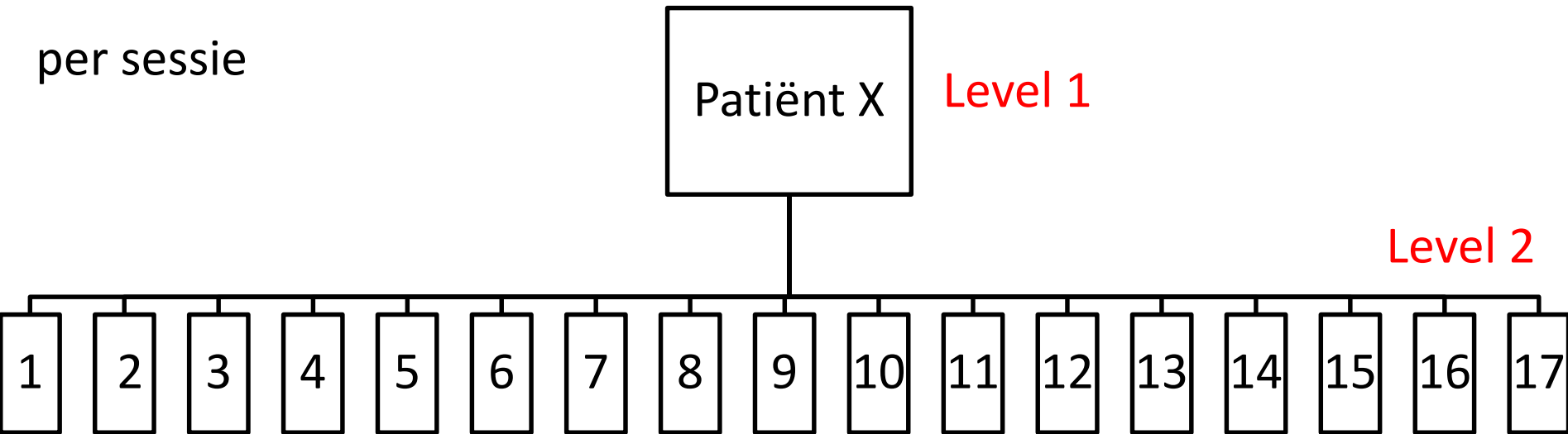


Cluster A/B trekken

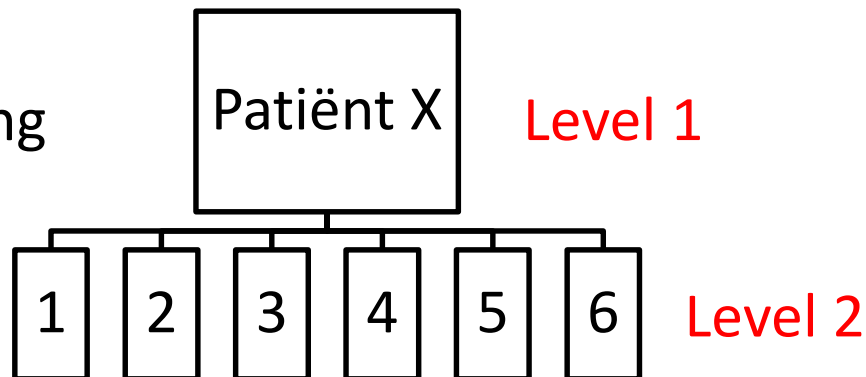
score 0-64

Herhaalde metingen: BDI-II

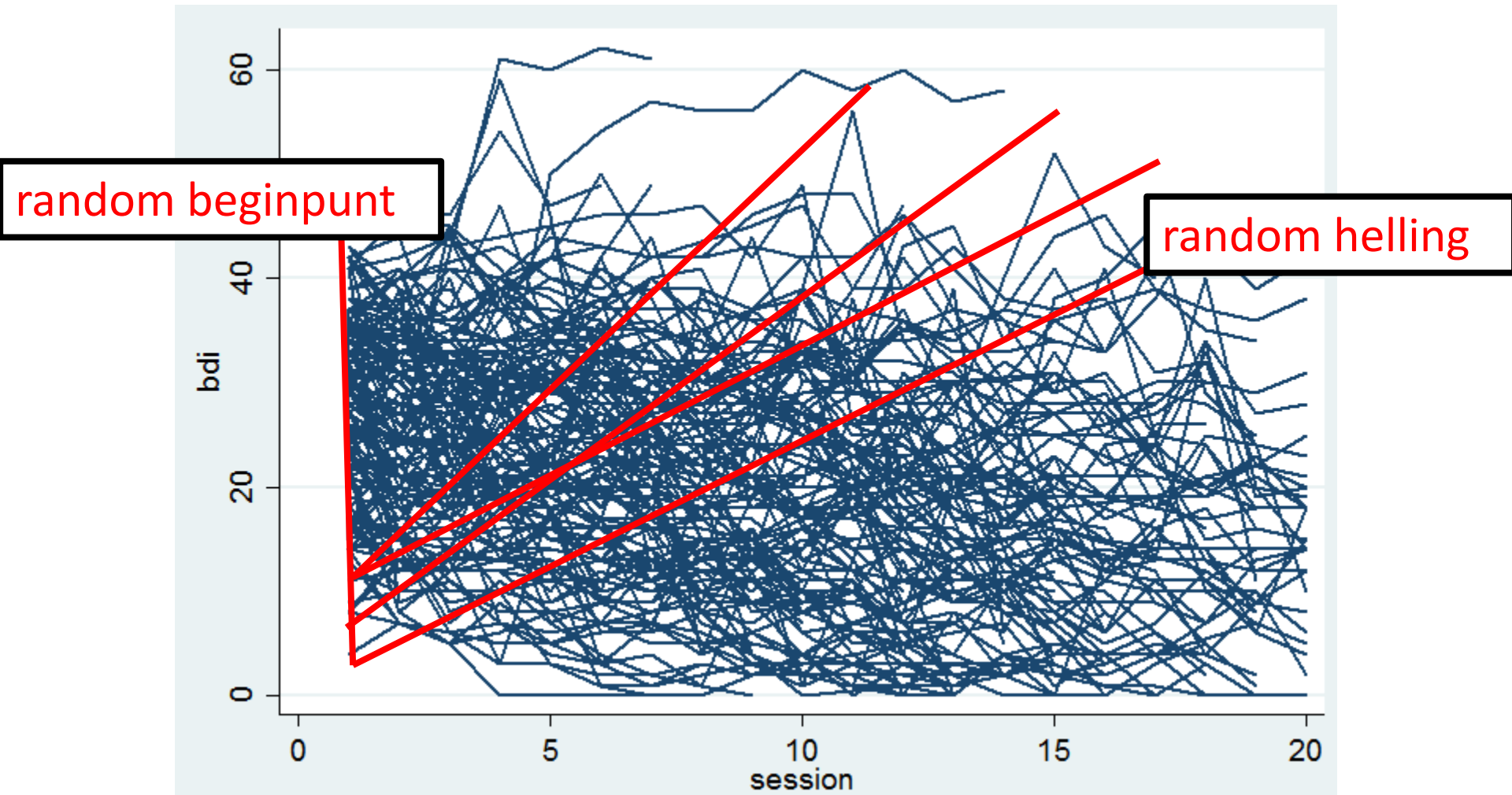
per sessie



maanden na behandeling

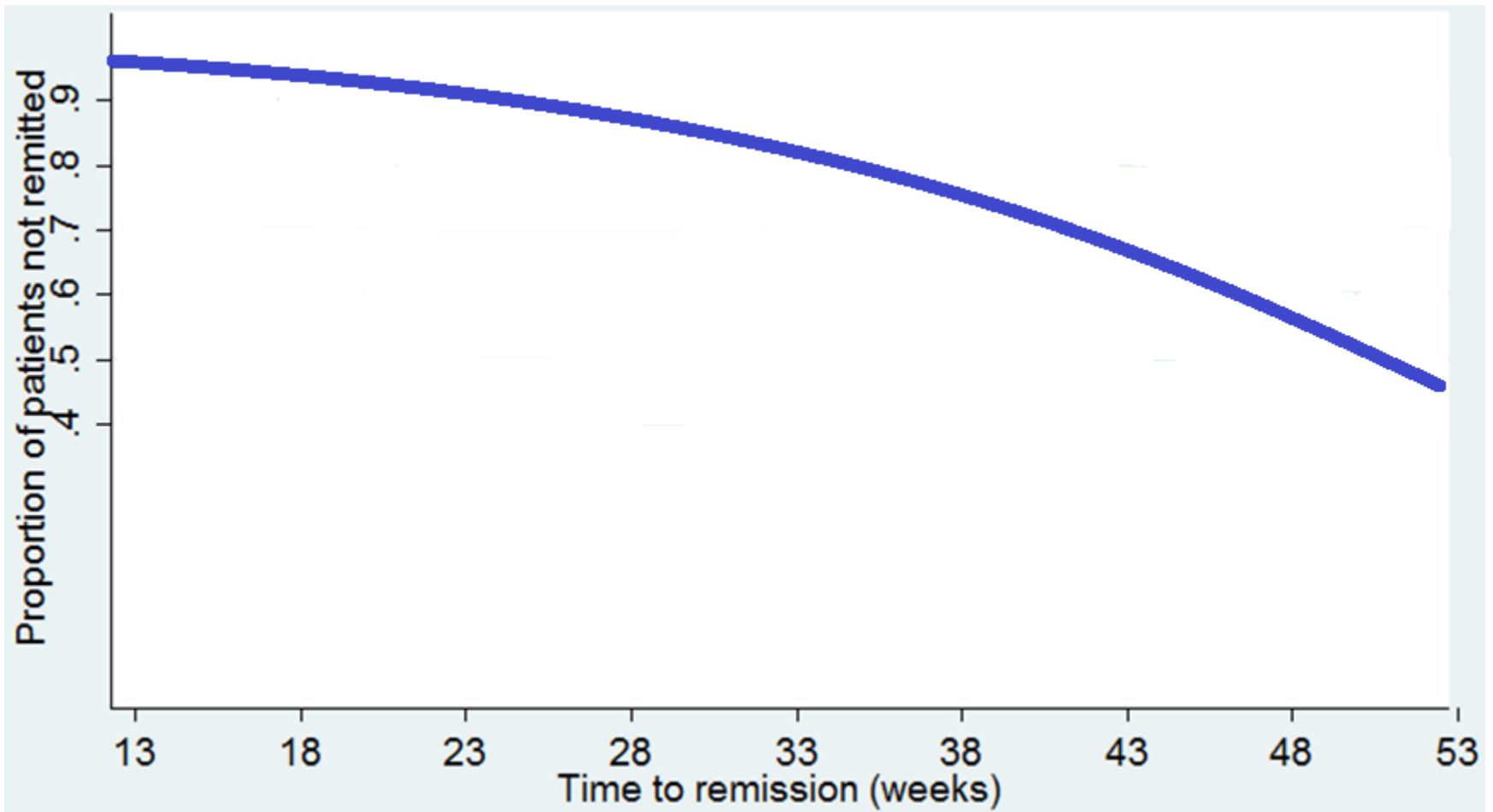


Multilevel model: depressie beloop



Survival analyse: remissie

Remissie = BDI < 10 voor 3 weken = †



Predictoren

Persoonlijkheidsstoornis (trekken)

Persoonlijkheidsstoornis (trekken) x behandeling

Persoonlijkheidsstoornis (trekken) x tijd

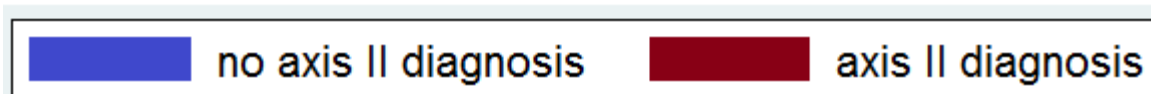
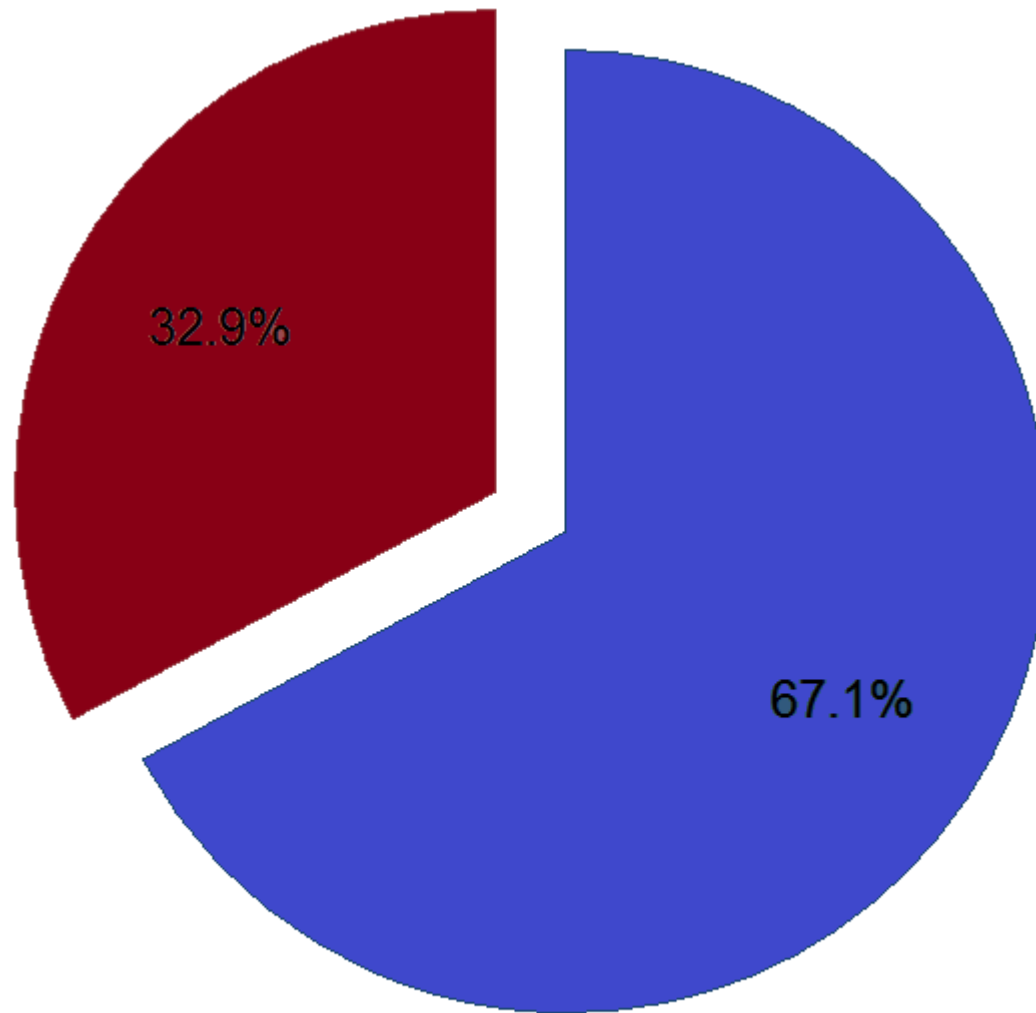
Persoonlijkheidsstoornis (trekken) x behandeling x tijd

Baseline BDI-II

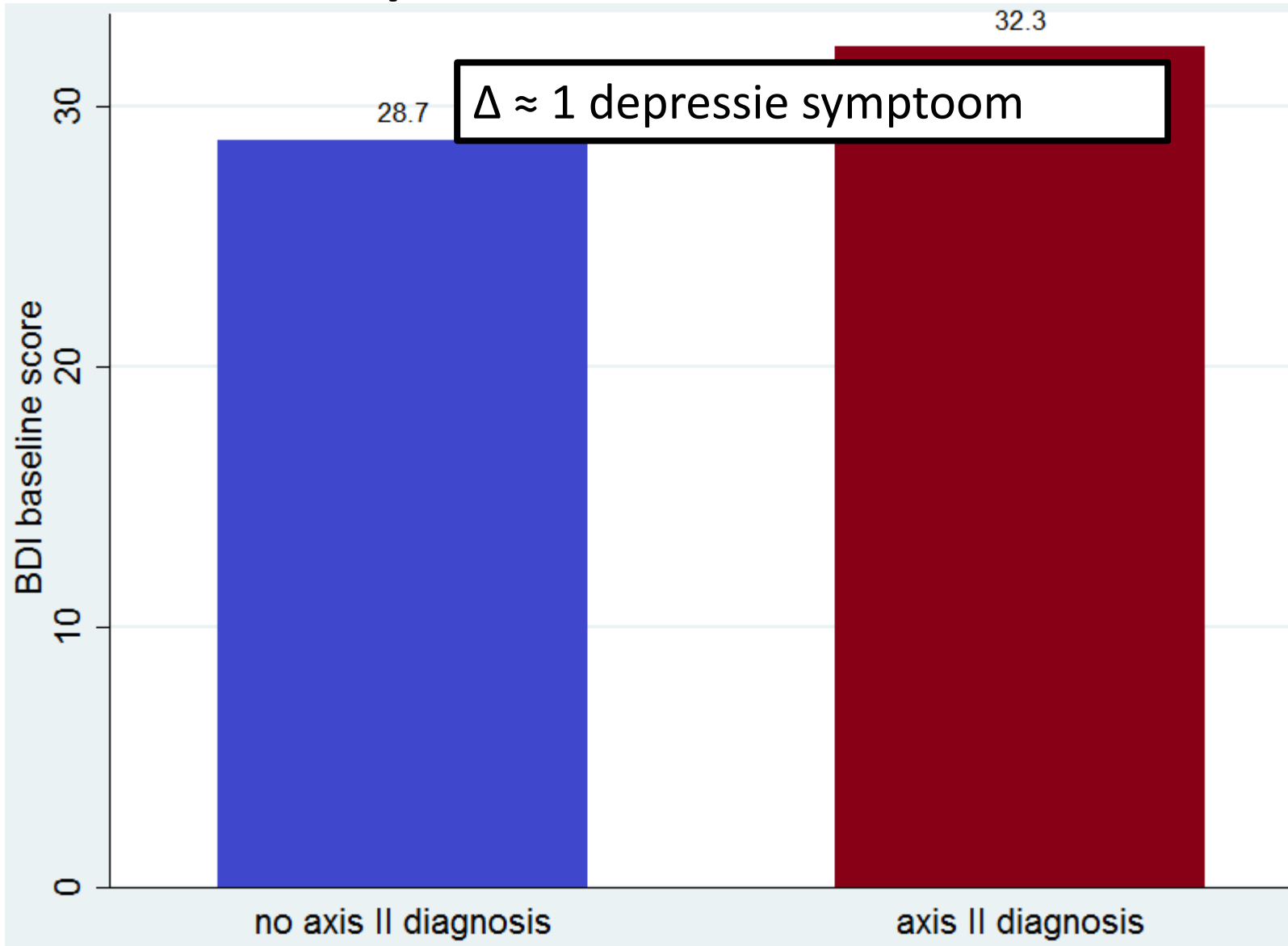


Uitkomst: BDI-II: depressie-symptomatologie (zelf-rapportage)

Sample karakteristieken



Sample karakteristieken



Uitkomsten: cluster C persoonlijkheidsstoornis

CT



+ cluster C persoonlijkheidsstoornis



hetzelfde

IPT



+ cluster C persoonlijkheidsstoornis



hetzelfde

Uitkomsten: persoonlijkheidsstoornis trekken

CT



+ obsessief compulsieve trekken



beter

IPT

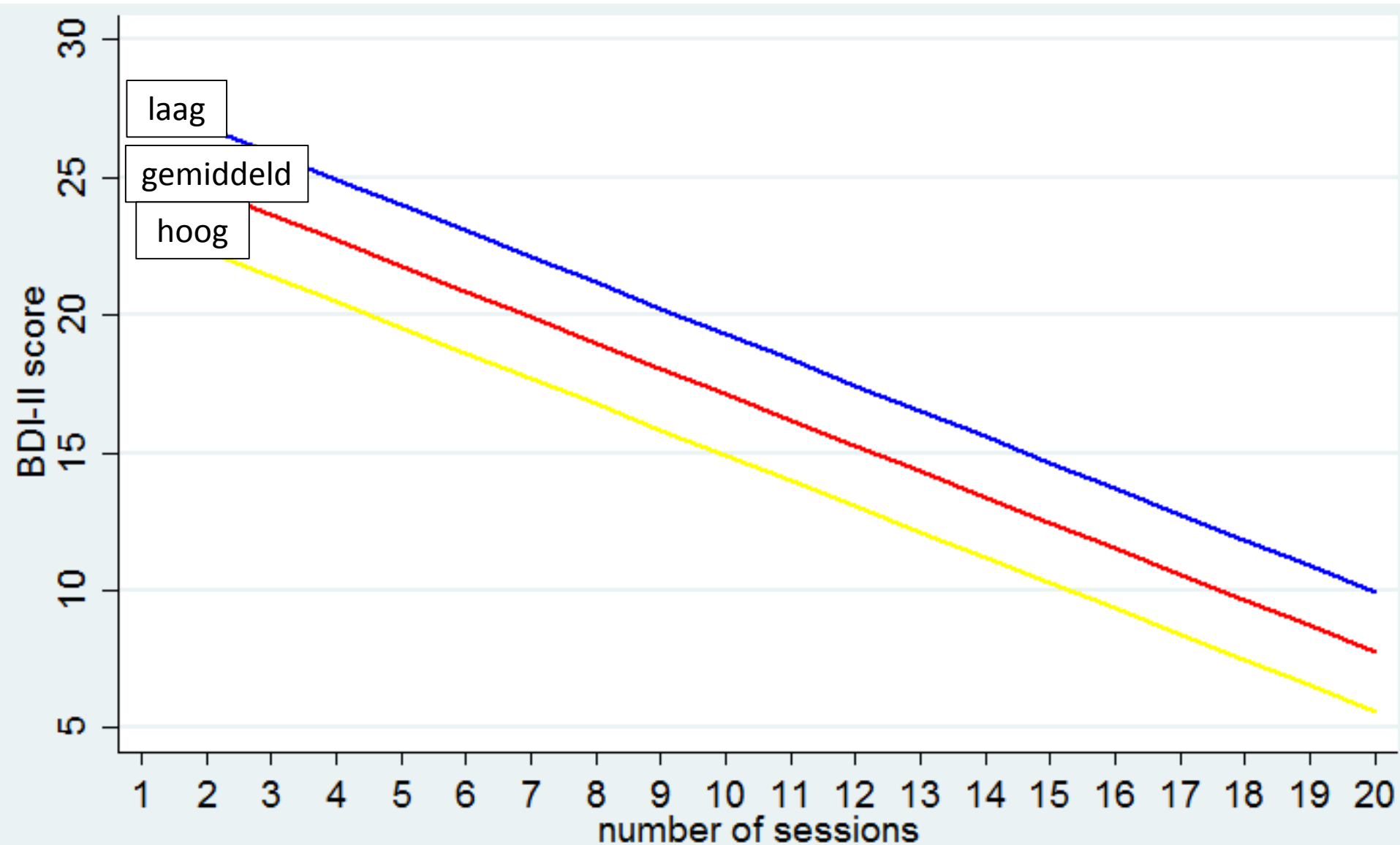


+ obsessief compulsieve trekken

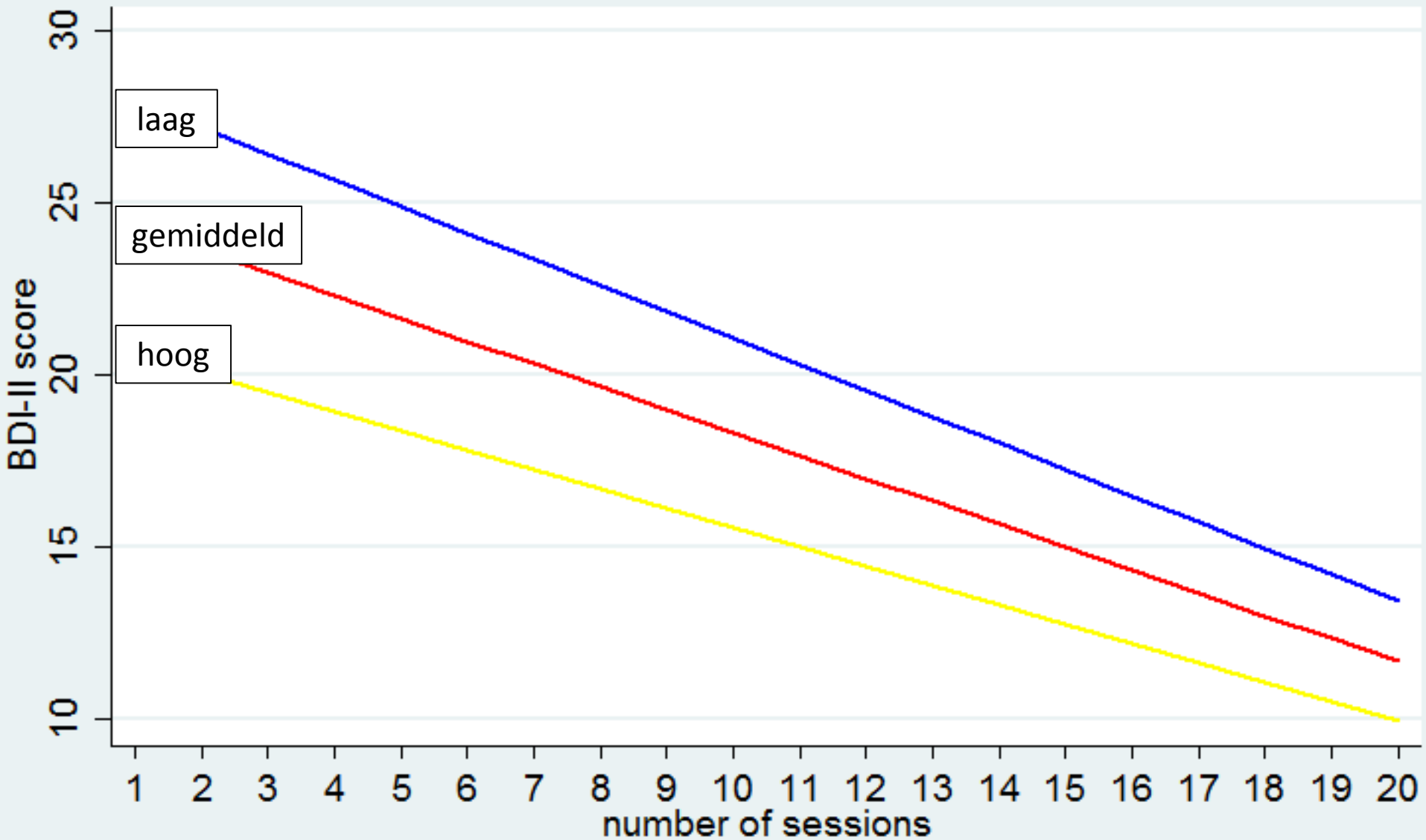


beter

Obsessief compulsieve trekken: CT

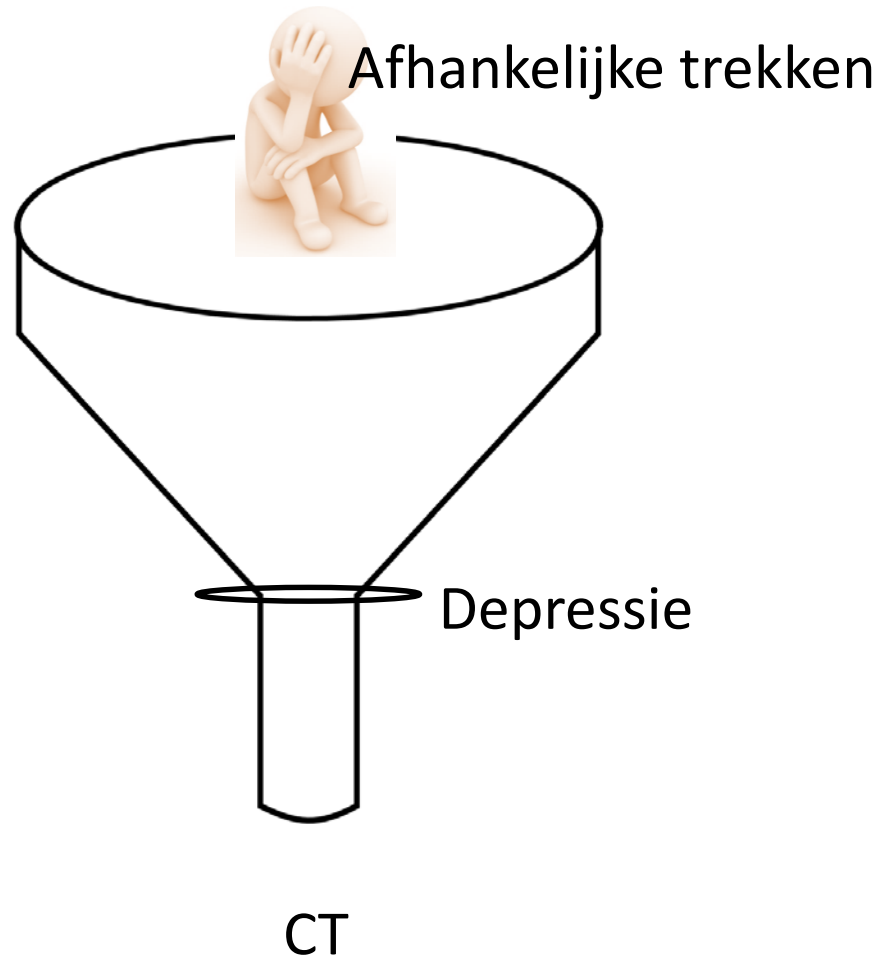


Obsessief compulsieve trekken: IPT

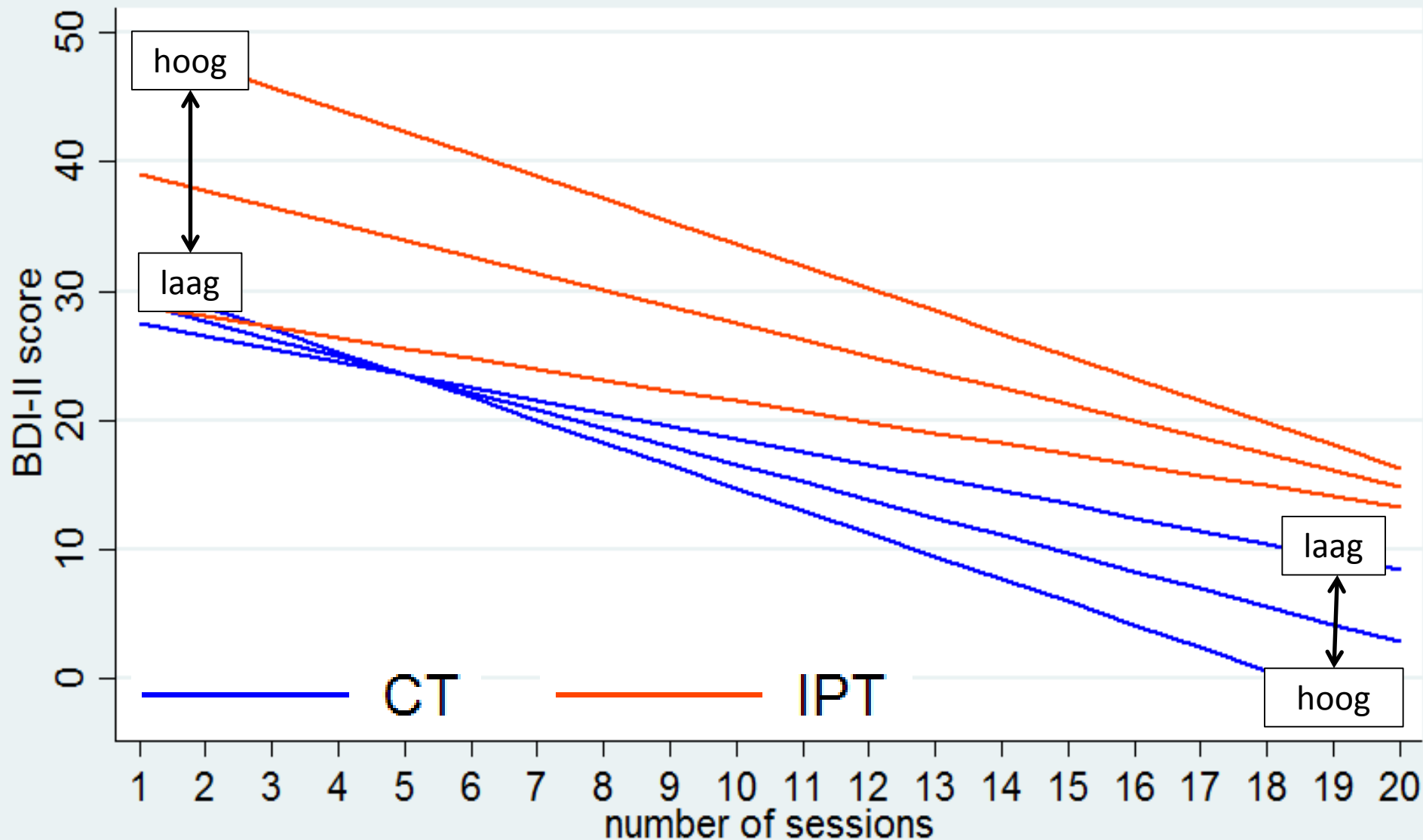


Wat past bij wie?

Afhankelijke trekken



Afhankelijke trekken: CT versus IPT



Conclusie



+ cluster C persoonlijkheidsstoornis



Afhankelijke **trekken**



CT

De invloed van persoonlijkheid op de effectiviteit van cognitieve therapie en interpersoonlijke therapie voor depressie



Suzanne van Bronswijk
Arts in opleiding tot psychiater
9.10.2015

Referenties

- McBride C, Atkinson L, Quilty LC, Bagby RM. Attachment as moderator of treatment outcome in major depression: a randomized control trial of interpersonal psychotherapy versus cognitive behavior therapy. *J Consult Clin Psychol*. 2006 Dec;74(6):1041-54.
- Ryder AG, Quilty LC, Vachon DD, Bagby RM. Depressive personality and treatment outcome in major depressive disorder. *J Pers Disord*. 2010 Jun;24(3):392-404.
- Bagby RM, Psych C, Quilty LC, Ryder AC. Personality and depression. *Can J Psychiatry*. 2008 Jan;53(1):14-25.
- Corruble E, Ginestet D, Guelfi JD. Comorbidity of personality disorders and unipolar major depression: a review. *J Affect Disord*. 1996 Apr 12;37(2-3):157-70.
- Skodol AE, Stout RL, McGlashan TH, Grilo CM, Gunderson JG, Shea MT, Morey LC, Zanarini MC, Dyck IR, Oldham JM. Co-occurrence of mood and personality disorders: a report from the Collaborative Longitudinal Personality Disorders Study (CLPS). *Depress Anxiety*. 1999;10(4):175-82.
- Grant BF, Hasin DS, Stinson FS, Dawson DA, Patricia Chou S, June Ruan W, Huang B. Co-occurrence of 12-month mood and anxiety disorders and personality disorders in the US: results from the national epidemiologic survey on alcohol and related conditions. *J Psychiatr Res*. 2005 Jan;39(1):1-9.
- De Bolle M, De Fruyt F, Quilty LC, Rolland JP, Decuyper M, Bagby RM. Does personality disorder co-morbidity impact treatment outcome for patients with major depression? A multi-level analysis. *J Pers Disord*. 2011 Feb;25(1):1-15.
- Kool S, Schoevers R, de Maat S, Van R, Molenaar P, Vink A, Dekker J. Efficacy of pharmacotherapy in depressed patients with and without personality disorders: a systematic review and meta-analysis. *J Affect Disord*. 2005 Nov;88(3):269-78.
- Mulder RT. Personality pathology and treatment outcome in major depression: a review. *Am J Psychiatry*. 2002 Mar;159(3):359-71.
- Newton-Howes G, Tyrer P, Johnson T, Mulder R, Kool S, Dekker J, Schoevers R. Influence of personality on the outcome of treatment in depression: systematic review and meta-analysis. *J Pers Disord*. 2014 Aug;28(4):577-93.
- Hamburg MA, Collins FS. The path to personalized medicine. *N Engl J Med*. 2010 Jul 22;363(4):301-4.
- Simon GE, Perlis RH. Personalized Medicine for Depression: Can We Match Patients With Treatments? *Am J Psychiatry*. 2010 Dec;167(12):1445-55
- Beck, A.T., Rush, A. J., Shaw, B. F., et al (19 7 9). *Cognitive Therapy of Depression*. Guilford
- Klerman, G. L., Weissman, M. M., Rounsaville, B. J., et al (19 8 4). *Interpersonal Psychotherapy for Depression*.
- Barber JP, Muenz LR. The role of avoidance and obsessiveness in matching patients to cognitive and interpersonal psychotherapy: empirical findings from the treatment for depression collaborative research program. *J Consult Clin Psychol*. 1996 Oct;64(5):951-8.
- Elkin I, Shea MT, Watkins JT, Imber SD, Sotsky SM, Collins JF, Glass DR, Pilkonis PA, Leber WR, Docherty JP, et al. National Institute of Mental Health Treatment of Depression Collaborative Research Program. General effectiveness of treatments. *Arch Gen Psychiatry*. 1989 Nov;46(11):971-82
- Shea MT, Pilkonis PA, Beckham E, Collins JF, Elkin I, Sotsky SM, Docherty JP. Personality disorders and treatment outcome in the NIMH Treatment of Depression Collaborative Research Program. *Am J Psychiatry*. 1990 Jun;147(6):711-8.
- Luty SE, Carter JD, McKenzie JM, Rae AM, Frampton CM, Mulder RT, Joyce PR. Randomised controlled trial of interpersonal psychotherapy and cognitive-behavioural therapy for depression. *Br J Psychiatry*. 2007 Jun;190:496-502.
- Joyce PR, McKenzie JM, Carter JD, Rae AM, Luty SE, Frampton CM, Mulder RT. Temperament, character and personality disorders as predictors of response to interpersonal psychotherapy and cognitive-behavioural therapy for depression. *Br J Psychiatry*. 2007 Jun;190:503-8.
- Carter JD, Luty SE, McKenzie JM, Mulder RT, Frampton CM, Joyce PR. Patient predictors of response to cognitive behaviour therapy and interpersonal psychotherapy in a randomised clinical trial for depression. *J Affect Disord*. 2011 Feb;128(3):252-61.
- Lemmens LH, Arntz A, Peeters FP, Hollon SD, Roefs A, Huibers MJ. Effectiveness, relapse prevention and mechanisms of change of cognitive therapy vs. interpersonal therapy for depression: Study protocol for a randomised controlled trial. *Trials*. 2011 Jun 14;12:150.
- Lemmens LH, Arntz A, Peeters F, Hollon SD, Roefs A, Huibers MJ. Clinical effectiveness of cognitive therapy v. interpersonal psychotherapy for depression: results of a randomized controlled trial. *Psychol Med*. 2015 Feb 2:1-16.